

# BETHANY ELC NEWSLETTER

1ST OF MAY 2024  
TERM 2 WEEK 1



Welcome back to ELC for Term 2!

We hope that the term break provided a pause from the usual routine and families were able to find some rest and relaxation in the busy-ness of life.

Each term we look into sharing our core principles of “we care, we create, we challenge, we change”.

This term we will be encouraging the children in their capabilities to create and will teach them about their importance to God and those around them because He has created them!

Over the holidays some of the ELC students have been enjoying a more relaxed atmosphere with special themed programs including science experiments and sensory experiences, along with fun “wheels day” gross motor development and inspiring creative thinking with a “making day” and rainbow themed play based learning.

We are all looking forward to what this term will bring for our ELC community of students, families, and educators.

Please remember to label all your children’s clothing items, as jackets may be taken on and off multiple times in the lovely mild weather we are having.

We would also like to remind you to fill out the surveys and forms, so we can continue to partner together over the year.

**Blessings,**

**Lee Haywood - ELC Co-Educator**

# OUR LEARNING

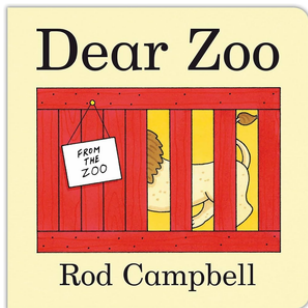


We are starting to learn letters by having a “Letter of the Week”! This week’s letter is the letter M.

**What are some words that start with the letter ‘m’?**

We will be learning together about how paper is made!

**Can you share with someone in your family something that is in paper?**



At our story table, we will explore the book: Dear Zoo!

**Can you share with someone in your family what this book is about?**

# OUR LEARNING

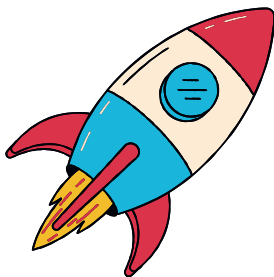


In devotions this term, we are learning about how good and loving God is.

**What have you learnt this term about God's love for you?**

We will explore numbers through different fun games like number rockets!

**Can you show someone in your family how to play number rockets?**



We are learning to help keep each other safe as we play here at the ELC!

**What are some ways you can help keep yourself and your ELC friends safe?**

# OTHER INFORMATION

## Communication:

Each child has their own pocket in the foyer where you will find notices. Please remember to check this each day your child is in ELC, please also check Storypark for regular updates of our daily activities, and your emails for ongoing communication.

We understand you may need to contact the ELC other times throughout the day which you are welcome to do via email: [elc@bethany.sa.edu.au](mailto:elc@bethany.sa.edu.au), or phone: 8283 0000.



13. Explore your garden with a magnifying glass
14. Float a leaf in a pond or stream
15. Listen to a storm and watch for lightning



## Important Dates Upcoming in Term 2:

Pop Up Bookshop Fundraiser	Week 2 Mon, Wed, Fri (6/5, 8/5, 10/5)
Mother's Day Come and Play	Week 2 Mon-Wed (6/5-8/5)
Mother's Day Stall	Week 2 Thu-Fri (9/5-10/5)
Parent Teacher Conversations	Week 3 Mon, Wed-Thurs (13/5, 15/5-16/5)
Parent Teacher Conversations	Week 4 Tue-Wed (21/5-22/5)
Reconciliation Week	Week 5 Mon-Fri (27/5-31/5)
Vision Screenings	Week 6 Mon, Thu & Week 10 Fri (3/6, 6/6, 5/7)
Excursion/Come & Play	Week 8 Tue-Thu (18/6-20/6)
NAIDOC Week	Holidays Week 1 (8/7-12/7)

